

How-to GAINSERVERTM

Using Trading Server Like A PRO

PART 2
For Clients Only

Prelude.....	3
Automate System?.....	4
1. Remote Server.....	4
2. Using as Trading Server.....	10
1. Webhook API Notification.....	12
2. WinAutoLogin Activation.....	14
3. MetaKeeper Watchdog.....	18
4. LogMan.....	20
3. Running your Expert.....	21
①Running Experts On MetaTrader 4 + MetaKeeper.....	23
②Running Experts On MetaTrader 5.....	30
③Running MetaTrader On Startup Windows.....	31
4. Server Monitoring & Analyzing.....	34
1. Task Manager Monitoring.....	34
2. CPU Overload Logs.....	34
3. Memory Overload Logs.....	34
4. Login Logs.....	35
5. Reboot Logs.....	35
Thank you.....	36

Prelude

Thank you for choosing Gainserver.com as your business server partner. We want to ensure that you can utilize all the features we provide to advance your trading business.

So, get ready to follow this guide and make sure you have received your server credentials. This guide will help you right from the very beginning.

If you do not yet have our services, please follow the instructions from our partner to receive our full service and support.

Automate System?

This is a KEY feature of our trading servers. The system comes with active configurations set by default, and there are parts that you need to activate. Don't worry, even if you're a beginner, the process is very simple.

1. Remote Server

First, remote into your server using the credentials you have received.

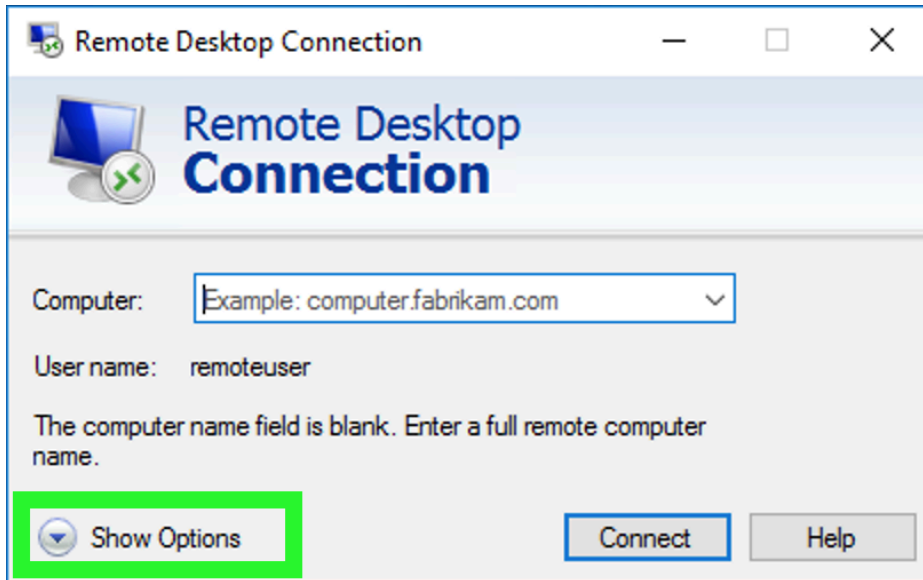
Search for the program in Windows: **Remote Desktop Connection.**



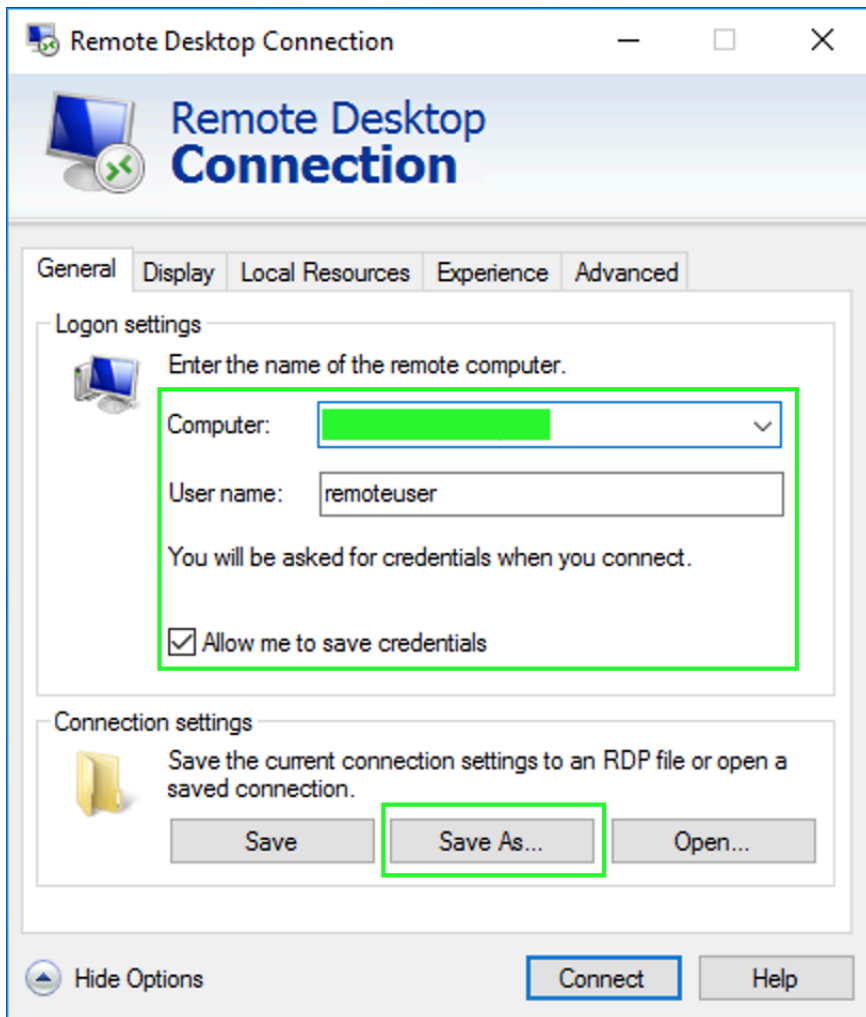
Remote Desktop Connection

Desktop app

When the program opens, it will look like the image below. Click the **Show Options** button.



The Remote Desktop Connection window will appear with more options to configure your remote session, as shown below:



Computer: Input Server IP Address.

User name: Input Your Username.

Checked Allow me to save credentials

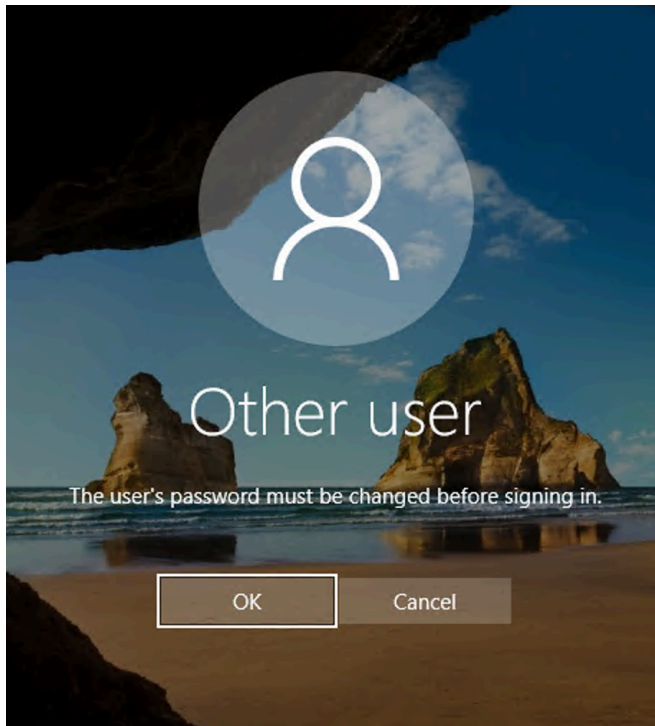
Next, click **Save As** to save the remote configuration as an RDP file.

Use this RDP file to access your server again.

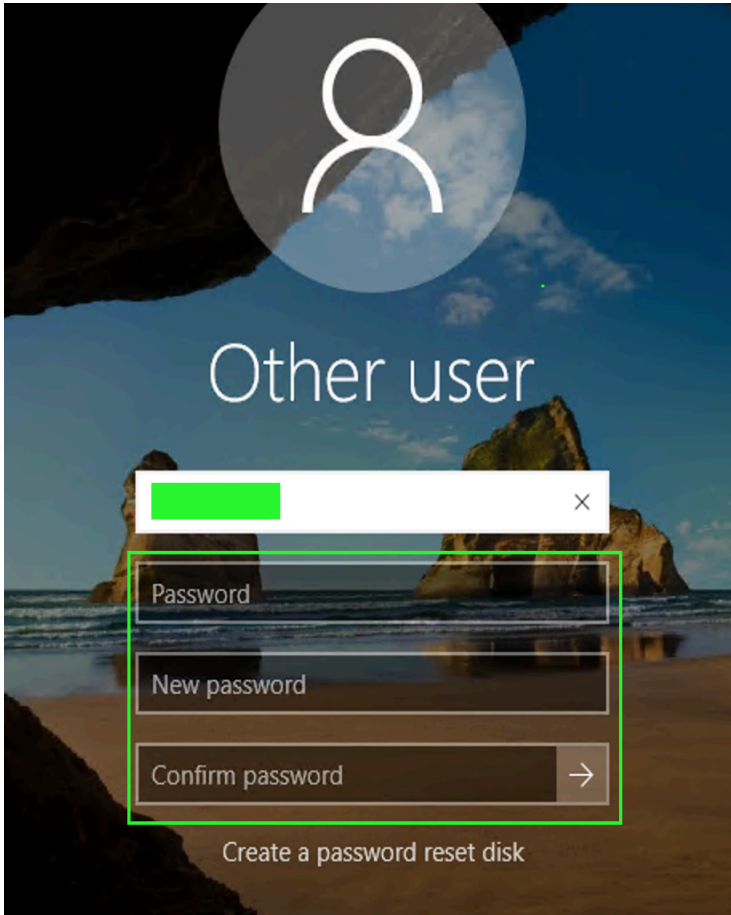
Click the **Connect** button to start your remote session.

When connected, you will be prompted to enter the default password you received from us via email. Enter this password in the **Enter your credentials** windows.

Then, follow the instructions to change your password before accessing your server.



Click "**OK**" to follow the instructions for changing your password.



Strength Password Required

Use a minimum of 10 characters, including lowercase letters, uppercase letters, and special characters.

KEEP YOUR PASSWORD SECURE.

Password : Input default password.

New password : Input new password.

Confirm password : Input new password again.

Press the **Enter** key or click the arrow button.












Notice the server display above, highlighting the menus we marked with a **green box**. You will begin working with these menus.


2. Using as Trading Server

After successfully accessing the server for the first time, the system will automatically activate crucial features for trading activities. Let us guide you through the first steps of using our trading server.

Now, focus on the menus we mentioned earlier. Open the 'MENU' folder, and you will find the following contents:

 ADDON	7/3/2024 8:00 PM	File folder	
 AUTOMATE ACTIVATION	7/3/2024 8:00 PM	File folder	
 MONITORING & LOGS	7/3/2024 8:00 PM	File folder	
 TOOLS	7/3/2024 8:00 PM	File folder	
 TRADE UTILITIES	7/3/2024 8:00 PM	File folder	
 Affiliate Program	8/23/2023 12:11 PM	Shortcut	2 KB
 Restart	6/28/2024 5:31 PM	Application	298 KB

You will see several menus, which you can explore at your leisure. For now, we will guide you to highlight the "AUTOMATE ACTIVATION" folder. Please open this folder.

 1. Webhook API Notification	7/3/2024 8:00 PM	File folder
 2. WinAutoLogin Activation	7/3/2024 8:00 PM	File folder
 3. MetaKeeper Watchdog	7/3/2024 8:00 PM	File folder
 4. LogMan	7/3/2024 8:00 PM	File folder

There are 4 menus that we have arranged to help you get started easily.

1. Webhook API Notification

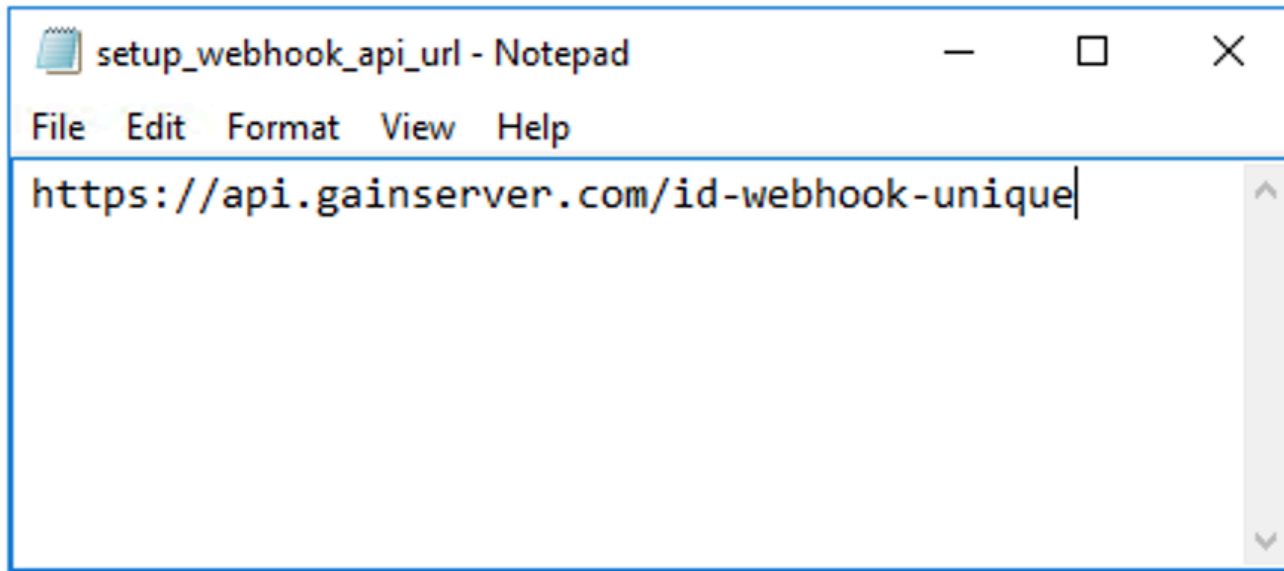
This tool integrates everything, with the webhook providing server interaction through messages sent to your email, WhatsApp, or Telegram.

Each webhook is a unique URL tailored for each customer.

Webhook format is `https://api.gainserver.com/id-webhook-unique`.

If you selected the Addon Webhook API during your order, open the **Webhook API Notification** folder, you will find a file inside: `setup_webhook_api_url_here.txt`

Open the `.txt` file and copy-paste your complete Webhook API URL.



```
setup_webhook_api_url - Notepad
File Edit Format View Help
https://api.gainserver.com/id-webhook-unique
```

The contents of the *setup_webhook_api_url_here.txt* file will look like the example above.

Press **Ctrl + S** or click **File > Save** to save your Webhook URL configuration.

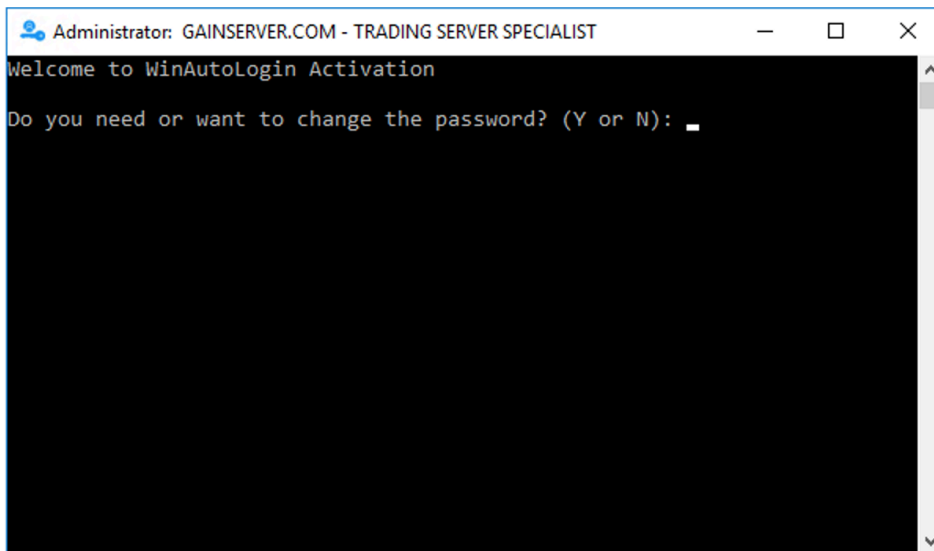
✓ SETTING WEBHOOK DONE

2. WinAutoLogin Activation

This activation allows the server to automatically run MetaTrader during the startup process. It provides a quick way to restart MetaTrader without the hassle of re-logging in and starting the program manually.

Open the **WinAutoLogin Activation** folder and run the program:

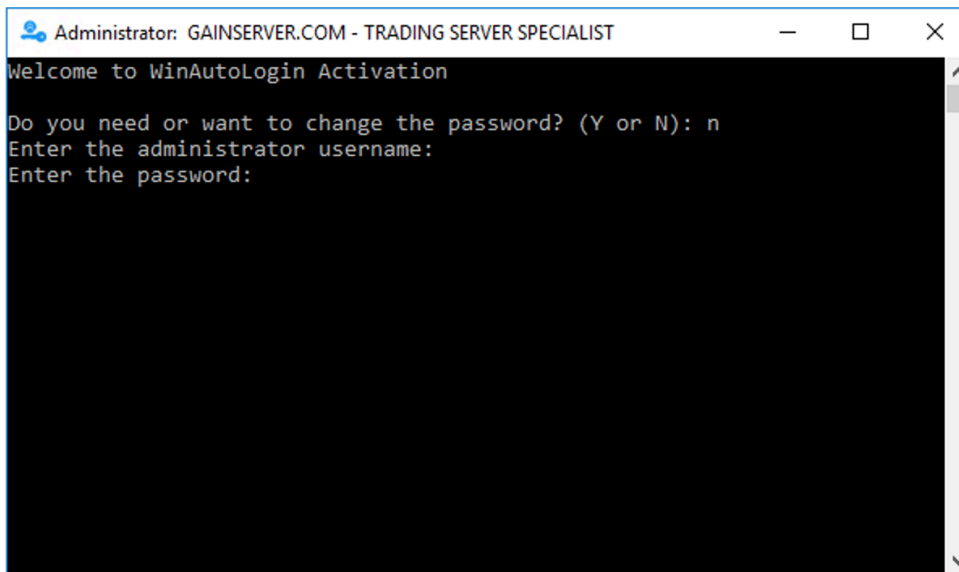
`WinAutoLoginActivation.exe`.



If your password meets the standard, continue by typing 'N'. If your password is still weak or has an easily guessable pattern, we highly recommend following the WinAutoLogin activation by changing your password first. To do this, type 'Y' to follow the password change prompts.

We assume you will not need to change your password again, as you already set a strong password during the initial remote session.

Type 'N' and press Enter. Then, follow the next instructions:



```
Administrator: GAINSERVER.COM - TRADING SERVER SPECIALIST
Welcome to WinAutoLogin Activation
Do you need or want to change the password? (Y or N): n
Enter the administrator username:
Enter the password:
```

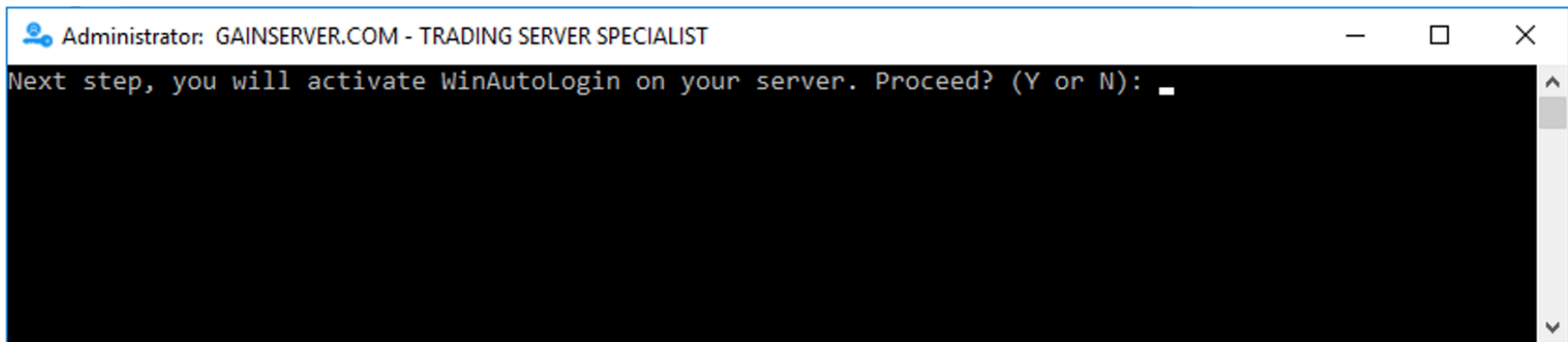
Enter the administrator username: input server username, press Enter

Enter the password: input server password, press Enter

Verifying password...

Enter the password for username: input server password again, press Enter

If the username and password are verified, the "Next step" window will appear as shown below:



Type 'Y' and press Enter to proceed with the activation.

The operation completed successfully.

WinAutoLogin has been successfully activated. Thank you for using our services!

If the information above appears, your activation has been successful.

 **WINAUTOLOGIN ACTIVATION DONE**

3. MetaKeeper Watchdog

MetaKeeper is a tool developed using Meta Language (MQL) to help monitor and reconnect live trading accounts in case of issues.

Did you know? Various potential issues such as chart freezes, login disconnections, and broker server problems can cause your live trading account to disconnect.

When a disconnection occurs, all your trading activities and robots come to a complete stop. With MetaKeeper, this condition will be monitored.

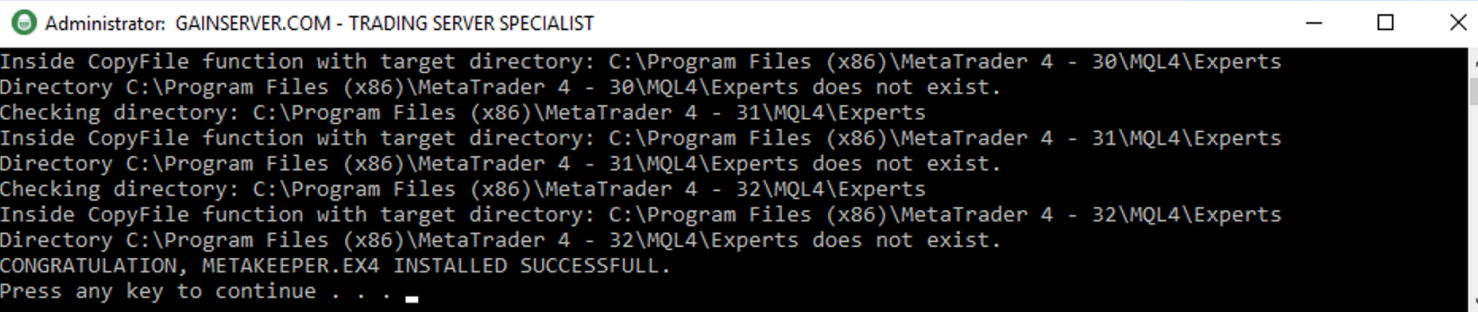
First, MetaKeeper will attempt to reconnect to your broker's server and ensure the account successfully logs in.

Second, MetaKeeper will send alerts or messages via email, WhatsApp, or Telegram. This will help you stay informed about the server status in real-time, even at the MetaTrader program level.

Start using MetaKeeper...

1. Easy Steps to Download & Install MetaKeeper

Open the **MetaKeeper Watchdog** folder and run the `MetaKeeper.exe` program. This application will install the "MetaKeeper.ex4" file to all pre-installed MetaTrader 4 instances on your server.



```
Administrator: GAINSERVER.COM - TRADING SERVER SPECIALIST
Inside CopyFile function with target directory: C:\Program Files (x86)\MetaTrader 4 - 30\MQL4\Experts
Directory C:\Program Files (x86)\MetaTrader 4 - 30\MQL4\Experts does not exist.
Checking directory: C:\Program Files (x86)\MetaTrader 4 - 31\MQL4\Experts
Inside CopyFile function with target directory: C:\Program Files (x86)\MetaTrader 4 - 31\MQL4\Experts
Directory C:\Program Files (x86)\MetaTrader 4 - 31\MQL4\Experts does not exist.
Checking directory: C:\Program Files (x86)\MetaTrader 4 - 32\MQL4\Experts
Inside CopyFile function with target directory: C:\Program Files (x86)\MetaTrader 4 - 32\MQL4\Experts
Directory C:\Program Files (x86)\MetaTrader 4 - 32\MQL4\Experts does not exist.
CONGRATULATION, METAKEEPER.EX4 INSTALLED SUCCESSFULL.
Press any key to continue . . .
```

Your installation is successful if the following information appears: CONGRATULATION, METAKEEPER.EX4 INSTALLED SUCCESSFULL.

Instructions for running `MetaKeeper.exe` can be found in Section 3 below.

 **METAKEEPER INSTALLATION DONE**

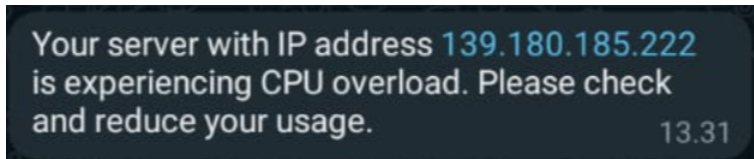
4. LogMan

The last folder in the AUTOMATE ACTIVATION menu is **LogMan**.

LogMan is a performance monitoring feature that periodically monitors the utility of your trading server. LogMan works in conjunction with the Webhook API Notification to send overload alerts to your email, WhatsApp, or Telegram. **This feature is very powerful.**

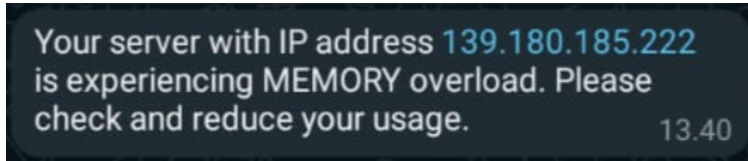
By default, the LogMan system is enabled on your trading server. This folder is useful if, in certain cases, you need to stop or restart the LogMan service. There are STOP and START LogMan buttons available.

Here is the CPU overload message:

A screenshot of a dark-themed notification message. The text is white and cyan. The IP address 139.180.185.222 is highlighted in cyan. The time 13.31 is in the bottom right corner.

Your server with IP address **139.180.185.222** is experiencing CPU overload. Please check and reduce your usage. 13.31

Here is the Memory overload message:



3. Running your Expert

This is the third step in using our server. After activating Automate (Section 2), you are now ready to start using MetaTrader on our server.

Refer to the menus displayed on the server desktop. You will find a folder named "Pre-installed Metatrader". This folder contains pre-installed MetaTrader 4 and MetaTrader 5 folders.

What is the function of the pre-installed MetaTrader?

The pre-installed MetaTrader is already set up for you, so you don't need to go through the hassle of installing the MetaTrader program yourself.

What are the advantages of the pre-installed MetaTrader?

The pre-installed MetaTrader is the basic program you're familiar with. To make MetaTrader easier to back up and to avoid using the Windows installation system, we have implemented the portable version for all pre-installed instances on the server.

Our lab engineer's research shows that this portable version of MetaTrader runs lighter and more powerfully than the normal installation version, without compromising any of the MetaTrader's functions.

Another advantage is that we have developed a Cross-Connect system within the server. This system isolates each use of our portable MetaTrader into single-thread processing. As a result, the pre-installed MetaTrader uses fewer CPU resources.

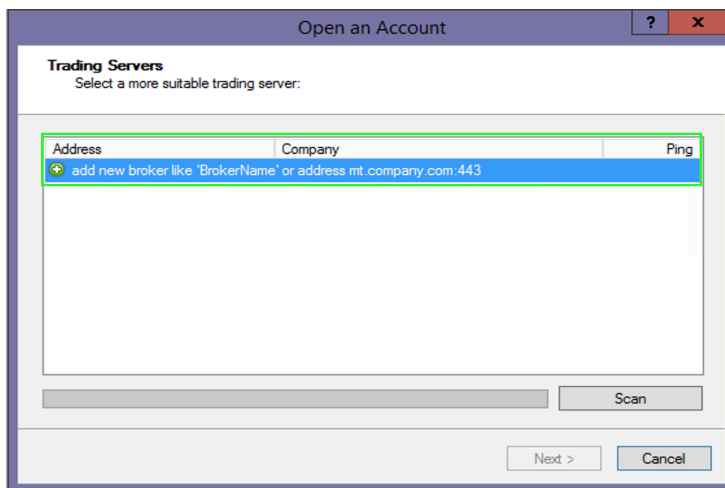
1 Running Experts On MetaTrader 4 + MetaKeeper

If you are using MT4, first run the pre-installed MetaTrader 4 and log in to your broker's server.

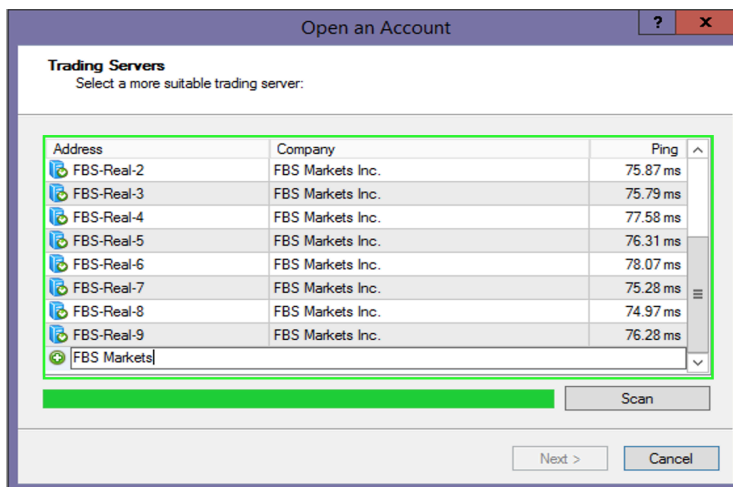
Scan Broker's Server (MetaTrader 4 File > Open an Account):

1. Enter the name of the broker's server you are using. Make sure you get the correct server name according to the broker's entity. For example: FBS Markets.

Before scanning the server:



After scanning with the keyword: FBS Markets



2. Once you have found the server name (server number) and the Ping column displays the milliseconds (ms), click on that server and then click the `Next` button. Next, enter your trading account Login and Password, and then click the `Finish` button.

Open an Account

Select account type
To start working an account is required:

To start working, you need a valid trade account. If you don't have it, you can create a demo or real account by selecting the corresponding option below and pressing "Next":

Existing trade account

Login:

Password: Save password

Server: FBS-Real-2

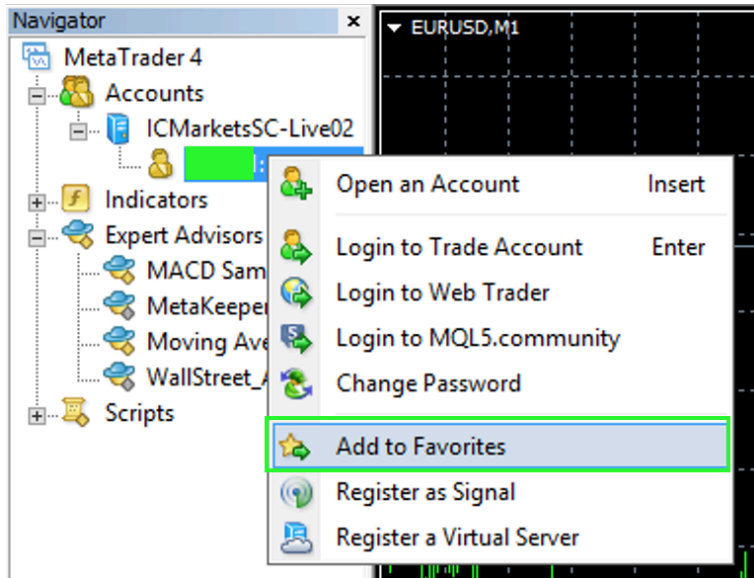
New demo account

New real account

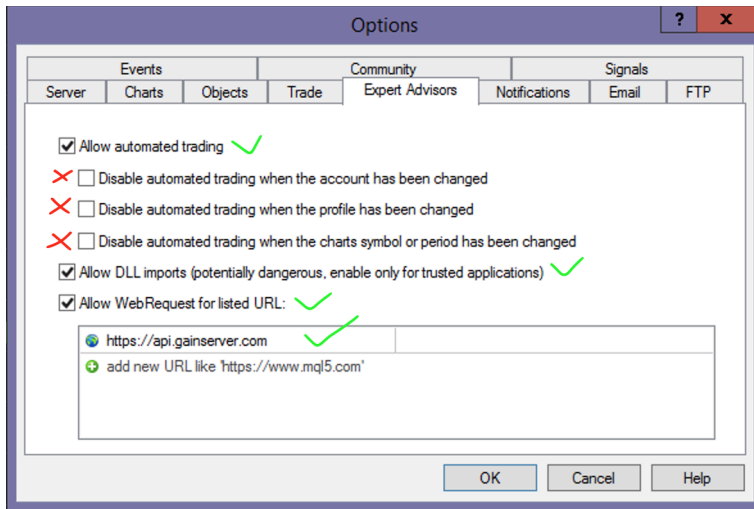
< Back Finish Cancel

After successfully logging in and before activating your EA, first run `MetaKeeper.ex4`. Here are the instructions for running `MetaKeeper.ex4`:

1. Make your trading account a favorite by right-clicking on the trading account and selecting the `Add to favorites` option. Refer to the image below:



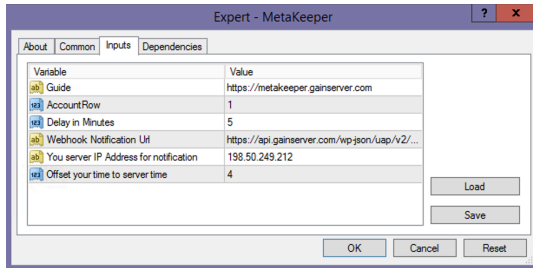
2. Go to the MetaTrader 4 menu `Tools > Options`, and select `Expert Advisors` tab menu, perform the following settings:



1. **Checked** Allow automated trading
2. **Unchecked** all options below:
 - **Unchecked** Disable automated trading when the account has been changed.
 - **Unchecked** Disable automated trading when the profile has been changed.
 - **Unchecked** Disable automated trading when the chart's symbol or period has been changed.
3. **Checked** Allow DLL imports.
4. **Checked** Allow WebRequest for listed URL, and input your Webhook Notification URL (domain or subdomain depending on the URL you received).

3. Attach `MetaKeeper.exe4` to just one chart and set the timeframe to 1 Minute.

For example, use the EURUSD chart with a 1 Minute (M1) timeframe. Then go to the Inputs configuration tab.



4. In the Inputs configuration of MetaKeeper, focus on the following settings:

`AccountRow`: Set to 1 (Use this default).

`Delay in Minutes`: Set to 5 (Recommended, this is the delay MetaKeeper uses to update monitoring).

`Webhook Notification Url`: Input the Webhook API URL you received.

`You server IP Address for notification`: Input your server's IP address.

`Offset your time to server time`: Input the difference between your timezone and the broker's timezone.

5. Click **OK** when done.

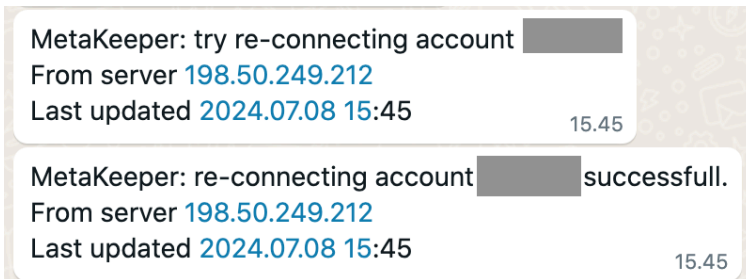
MetaKeeper will display the status on your chart as follows:

▼ EURUSD,M1

Server IP: 198.50.249.212, Live No: 300061, Broker name: Raw Trading Ltd

CONGRATULATION! Webhook Notification is ready to work!

MetaKeeper will also send messages to the email, WhatsApp, or Telegram account you use:



Congratulations, MetaKeeper is running in your terminal.

The account that monitors is the one that activates MetaKeeper. Therefore, if you run multiple accounts, it's advisable to activate MetaKeeper on all your trading accounts to ensure they are all monitored.

Once MetaKeeper is active, your next step is to run your EA as usual. MetaKeeper will function solely to monitor the status of your trading account and does not have trading capabilities. This allows you to run other EAs on the account with MetaKeeper without any issues.

2 Running Experts On MetaTrader 5

If you are using MT5, run the pre-installed MetaTrader 5 as needed.

1. Scan for your broker. The instructions for scanning the broker server are the same as for MetaTrader 4.
2. Log in to your trading account with the appropriate server.
3. Run your expert advisor (EA) as you normally would.

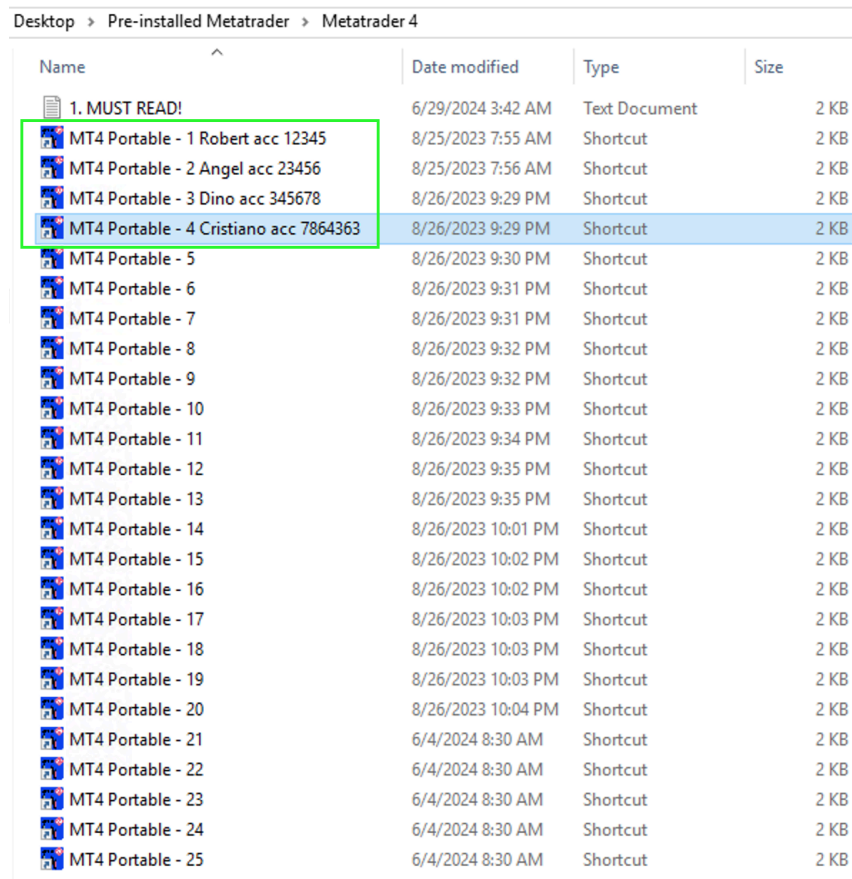
3 Running MetaTrader On Startup Windows

This section guides you on how to ensure that all MetaTrader instances, both MT4 and MT5, have the capability to `auto-open` during Windows startup. This feature is crucial and beneficial in the event of force majeure, unexpected issues, or simply a server reboot. All MetaTrader terminals can open automatically, allowing your trading activities to recover quickly.

How to Enable Auto-Open on Startup?

We have provided a **Startup** menu on your server desktop. By default, this folder is empty. All you need to do is copy the shortcuts of the pre-installed MetaTrader from the "Pre-Installed MetaTrader" folder and paste them into the **Startup** folder.





Label the MetaTrader shortcuts clearly, as shown below:



Name	Date modified	Type	Size
1. MUST READ!	6/29/2024 3:42 AM	Text Document	2 KB
MT4 Portable - 1 Robert acc 12345	8/25/2023 7:55 AM	Shortcut	2 KB
MT4 Portable - 2 Angel acc 23456	8/25/2023 7:56 AM	Shortcut	2 KB
MT4 Portable - 3 Dino acc 345678	8/26/2023 9:29 PM	Shortcut	2 KB
MT4 Portable - 4 Cristiano acc 7864363	8/26/2023 9:29 PM	Shortcut	2 KB
MT4 Portable - 5	8/26/2023 9:30 PM	Shortcut	2 KB
MT4 Portable - 6	8/26/2023 9:31 PM	Shortcut	2 KB
MT4 Portable - 7	8/26/2023 9:31 PM	Shortcut	2 KB
MT4 Portable - 8	8/26/2023 9:32 PM	Shortcut	2 KB
MT4 Portable - 9	8/26/2023 9:32 PM	Shortcut	2 KB
MT4 Portable - 10	8/26/2023 9:33 PM	Shortcut	2 KB
MT4 Portable - 11	8/26/2023 9:34 PM	Shortcut	2 KB
MT4 Portable - 12	8/26/2023 9:35 PM	Shortcut	2 KB
MT4 Portable - 13	8/26/2023 9:35 PM	Shortcut	2 KB
MT4 Portable - 14	8/26/2023 10:01 PM	Shortcut	2 KB
MT4 Portable - 15	8/26/2023 10:02 PM	Shortcut	2 KB
MT4 Portable - 16	8/26/2023 10:02 PM	Shortcut	2 KB
MT4 Portable - 17	8/26/2023 10:03 PM	Shortcut	2 KB
MT4 Portable - 18	8/26/2023 10:03 PM	Shortcut	2 KB
MT4 Portable - 19	8/26/2023 10:03 PM	Shortcut	2 KB
MT4 Portable - 20	8/26/2023 10:04 PM	Shortcut	2 KB
MT4 Portable - 21	6/4/2024 8:30 AM	Shortcut	2 KB
MT4 Portable - 22	6/4/2024 8:30 AM	Shortcut	2 KB
MT4 Portable - 23	6/4/2024 8:30 AM	Shortcut	2 KB
MT4 Portable - 24	6/4/2024 8:30 AM	Shortcut	2 KB
MT4 Portable - 25	6/4/2024 8:30 AM	Shortcut	2 KB

In the example above, there are four MetaTrader instances running. We copy-pasted the shortcuts of these four instances into the Startup folder so that they have the capability to auto-open.

Here are the files that have been copied to the Startup folder:

> AppData > Roaming > Microsoft > Windows > Start Menu > Programs > Startup				
Name		Date modified	Type	Size
 MT4 Portable - 1 Robert acc 12345		8/25/2023 7:55 AM	Shortcut	2 KB
 MT4 Portable - 2 Angel acc 23456		8/25/2023 7:56 AM	Shortcut	2 KB
 MT4 Portable - 3 Dino acc 345678		8/26/2023 9:29 PM	Shortcut	2 KB
 MT4 Portable - 4 Cristiano acc 7864363		8/26/2023 9:29 PM	Shortcut	2 KB

IT'S EASY, ISN'T IT?

Should all pre-installed programs be copied to Startup? **NO, DEFINITELY NOT.**

Only the ones you run need to have the Auto Open capability.

By following the above steps, you are now running your trading business using an EA on a server with our Automate System capabilities.

4. Server Monitoring & Analyzing

1. Task Manager Monitoring

Use Task Manager to monitor your server's CPU and Memory usage.

2. CPU Overload Logs

CPU Overload logs can be used to investigate and analyze when the server experiences overload, how often it occurs, and to what extent (percentage). This information will help you decide whether an upgrade to your package is necessary.

3. Memory Overload Logs

This file is similar to the CPU logs mentioned above but is specifically for monitoring memory overload.

4. Logon Logs

Every login made through Remote Desktop will be recorded in this log file. You can analyze this further if needed for security reasons.

5. Reboot Logs

The reboot log will detect the last time the server was rebooted or experienced a reboot caused by the provider. The log will display the user who performed the reboot. This can be used for further analysis to maintain server security.

Thank you

We hope this information is useful and helps ensure your success.

In addition to the main guide above, our server is also equipped with ADDONS, TOOLS, and other TRADE UTILITIES to support your trading business. To learn more, follow our information journal through the following media:



<https://t.me/gainserverchannel>

Save our contact, support@gainserver.com, in your Gmail or other email provider's contact list to ensure you don't miss any important updates we release.

Want to buy me a coffee ☕ ?

